

Door Type  
Dish Washer  
Model D1M/EC

# Global-Tek Machinery Pte Ltd

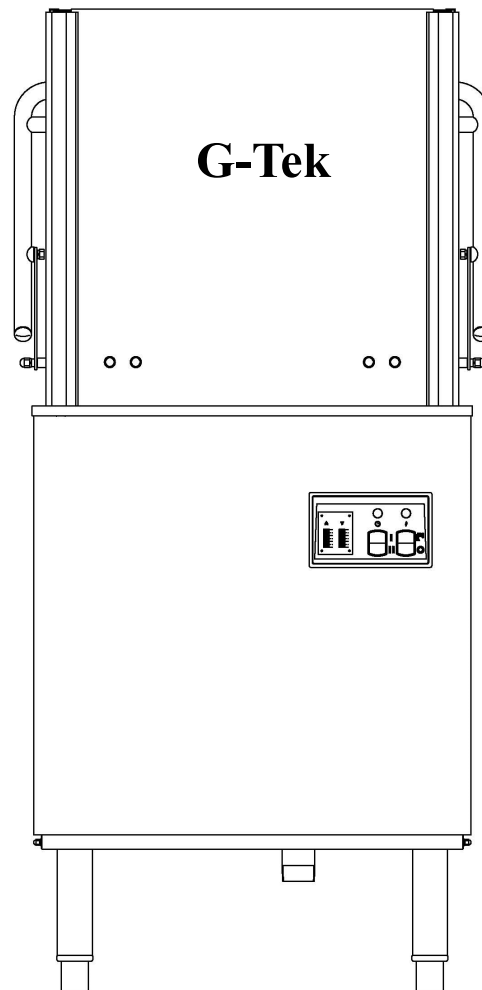
---

---

**Model: GT-D1M/EC**

---

**Door Type Dish Washer**





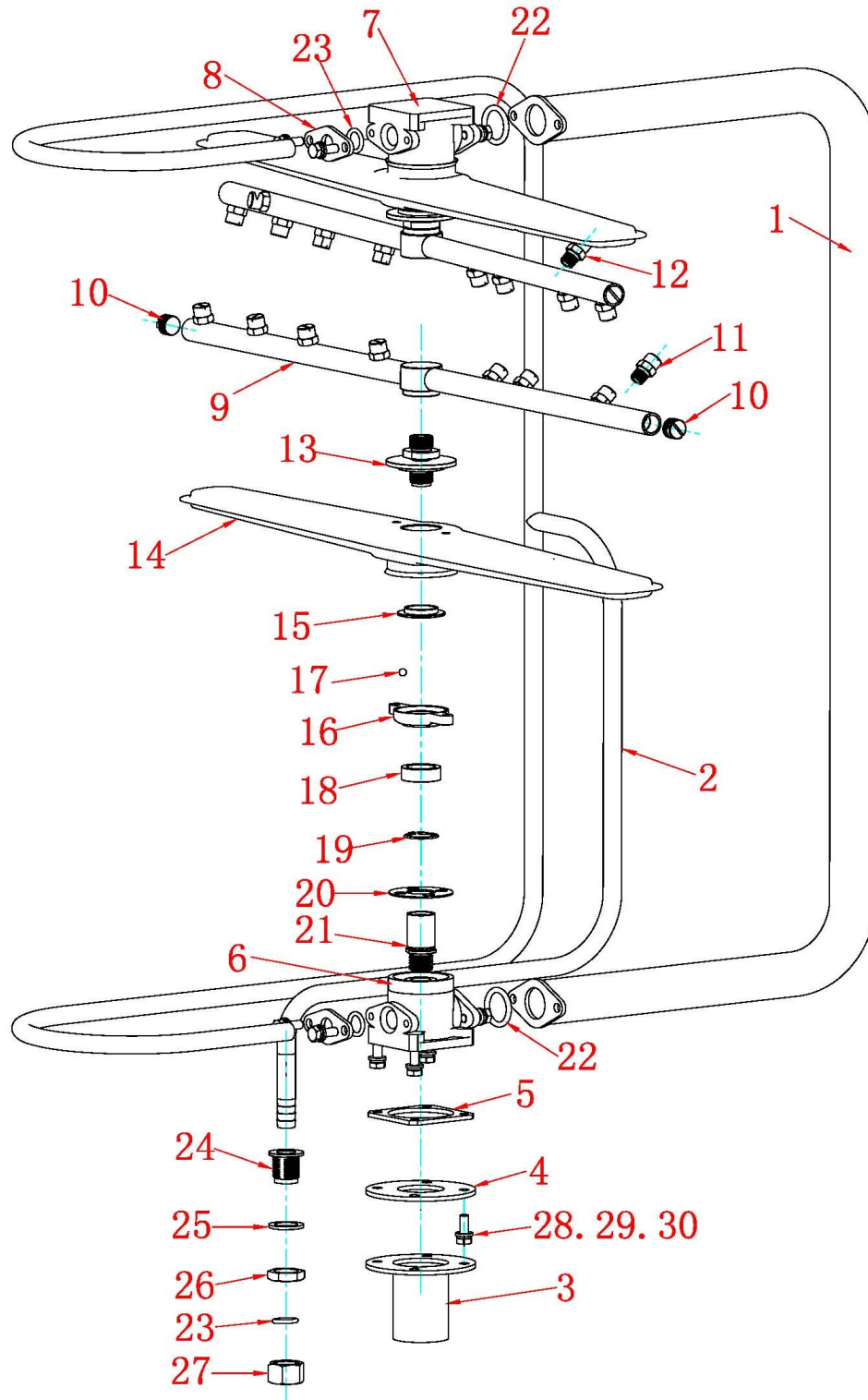
Door Type  
Dish Washer  
Model D1M/EC

## CONTENT

<b>Chapter</b>	<b>Description</b>	<b>Page no.</b>
1:	Wash and Rinse Arm Assembly.....	3 & 4
2:	Booster Heater.....	5
3:	Wash Chamber .....	7
4:	Door Lift.....	9
5:	Lower Frame Assembly.....	11
6:	Wash Tank .....	13
7:	Door Panel Assembly .....	15
8:	Control Panel 9D41-0008.....	17
9:	Control Panel 9D41-0008 FIR.....	19

## Chapter (1)

### Wash and Rinse Arm



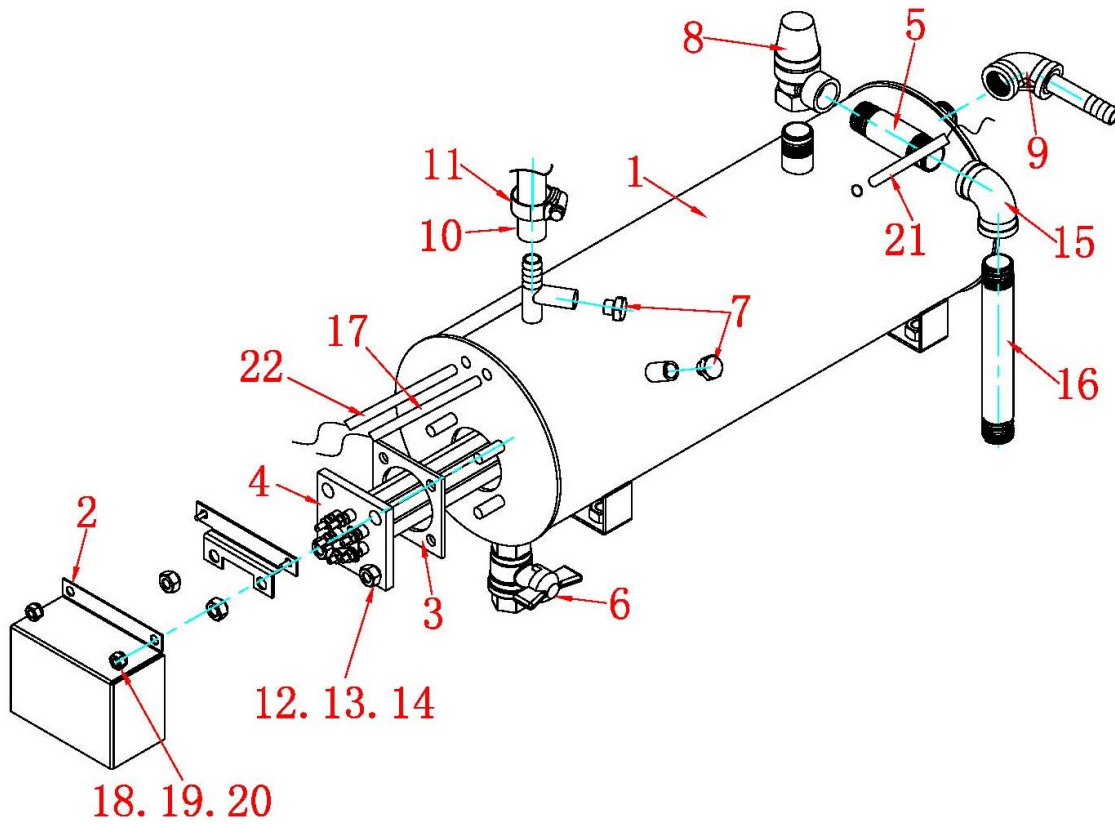
**Wash and Rinse Arm**

<b><u>Item No.</u></b>	<b><u>Parts No.</u></b>	<b><u>Part Name</u></b>	<b><u>Quantity</u></b>
1	0JD-50301	Wash Piping Assy	1
2	0JD-50302	Rinse Piping Assy	1
3	0JD-50306	Adapter Connector	1
4	F001-50319-01	Gasket	1
5	F001-50308B-01	Gasket	1
6	A012-50305/1A-01	Lower Manifold	1
7	A012-50305/2A-01	Upper Manifold	1
8	0JD-50302-3A	Flange	2
9	0JD-50311	Rinse Arm	2
10	A012-50311/5-01	End Cap	4
11	A012-50311/6-03	Nozzle	16
12	A012-50311/6-05	Nozzle	2
13	0JD-50311-7	Lock Washer	2
14	0JD-50310	Wash Arm	2
15	A012-50310/2-01	Bearing Retainer	2
16	A012-50310-01	Bearing Body	2
17	A007-D5-01	Ball Bearing	34
18	F017-50309-01	Washer	2
19	E019-M18-01	Spring Washer	2
20	0JD-50307	Flow Restrictor	2
21	A012-50304/2-01	Thread Bushing	2
22	F002-21.2x3.55-01	O Ring	2
23	F002-12.5x2.65-01	O Ring	3
24	A012-50312-01	Lasso	1
25	F017-2xD18xD25-01	Gasket	1
26	A012-50313-01	Thin Nut	1
27	A012-50314-01	Coupling	1
28	E010-M6x20-01	Blot M6x20	12
29	E011-M6-01	Spring Washer	12
30	E012-M6-01	Flat Washer	12

Door Type  
Dish Washer  
Model D1M/EC

## Chapter (2)

### Booster Heater

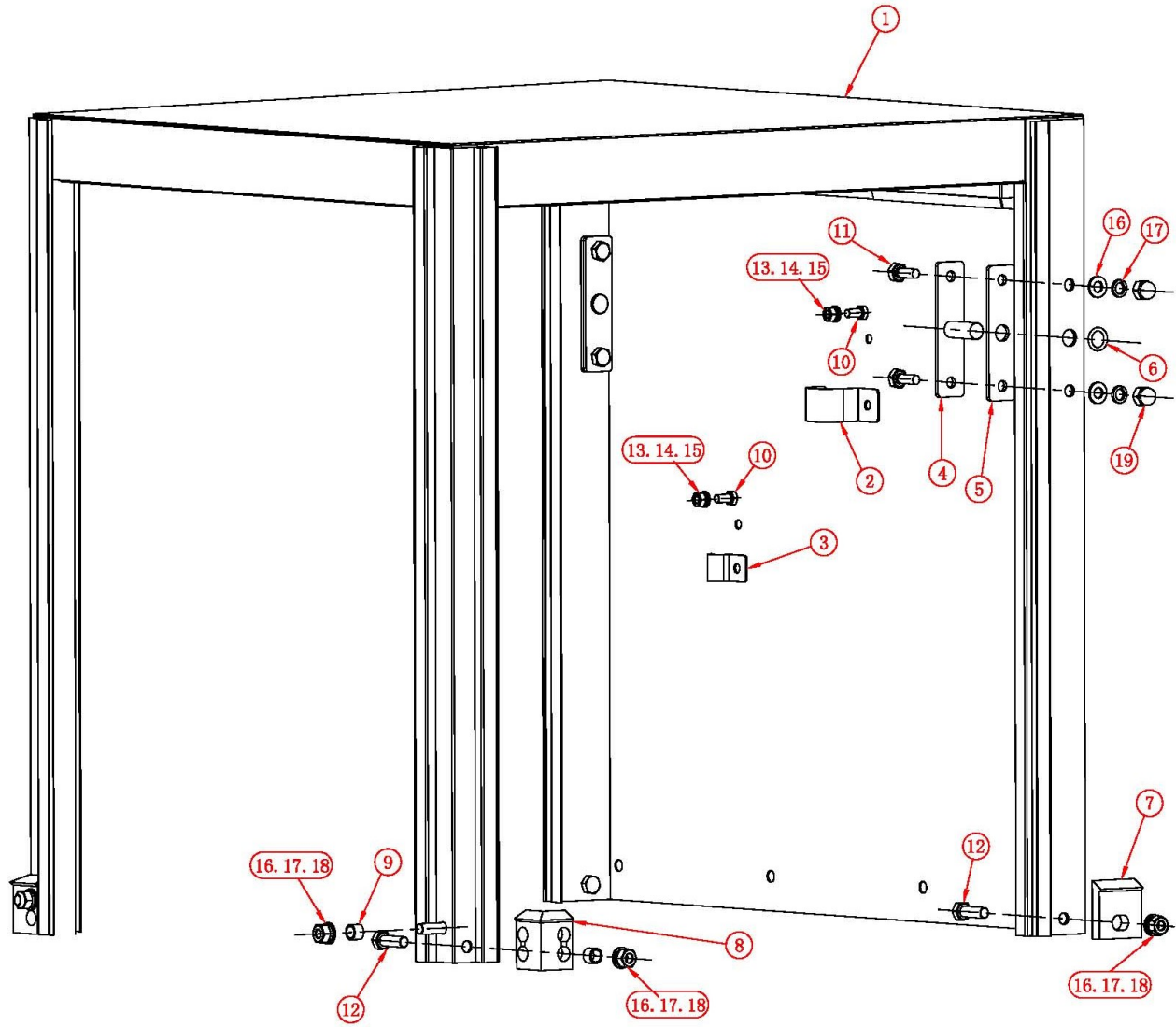


**Booster Heater**

<b><u>Item No.</u></b>	<b><u>Parts No.</u></b>	<b><u>Part Name</u></b>	<b><u>Quantity</u></b>
1	0JD-40A-301B	Booster Cylinder Tank w/insulation	1
2	0JD-40A-301-8A	Shield	1
3	F001-40309-01	Gasket	2
4	G005-9KW-02	9 kW Heater (208Vx400Heating	1
5	D004-1/2X85-01	1/2 " S.S. Joint	1
6	D018-1/2 -01	½" Drain Valve	1
7	D026-1/8-01	Hole Plug	2
8	D023-3bar-01	Pressure Relief Valve	1
9	D009-1/2-01	½" S.S. Elbow	1
10	F021-50310/3A-01	Rubber Hose	2
11	E018-11x25-01	Hose Clamp	2
12	E013- M8-01	Hexagonal Nut	4
13	E011-M8-01	Spring Washer	4
14	E012-M8-01	Flat Washer	4
15	D009-1/2-01	½" S.S. Elbow	1
16	D005-1/2x120-01	1/2 " S.S. Joint	1
17		Rinse Over-load Temp. Probe	1
18	E013-M6-01	Hexagonal Nut	2
19	E011-M6-01	Spring Washer	2
20	E012-M6-01	Flat Washer	2
21		Rinse Temp. Probe	1
22	G065-WZJ1020-02	Rinse Temp Display Probe (red)	1

Door Type  
**Chapter (3)**  
Washer  
Model D1M/EC

**Wash chamber**

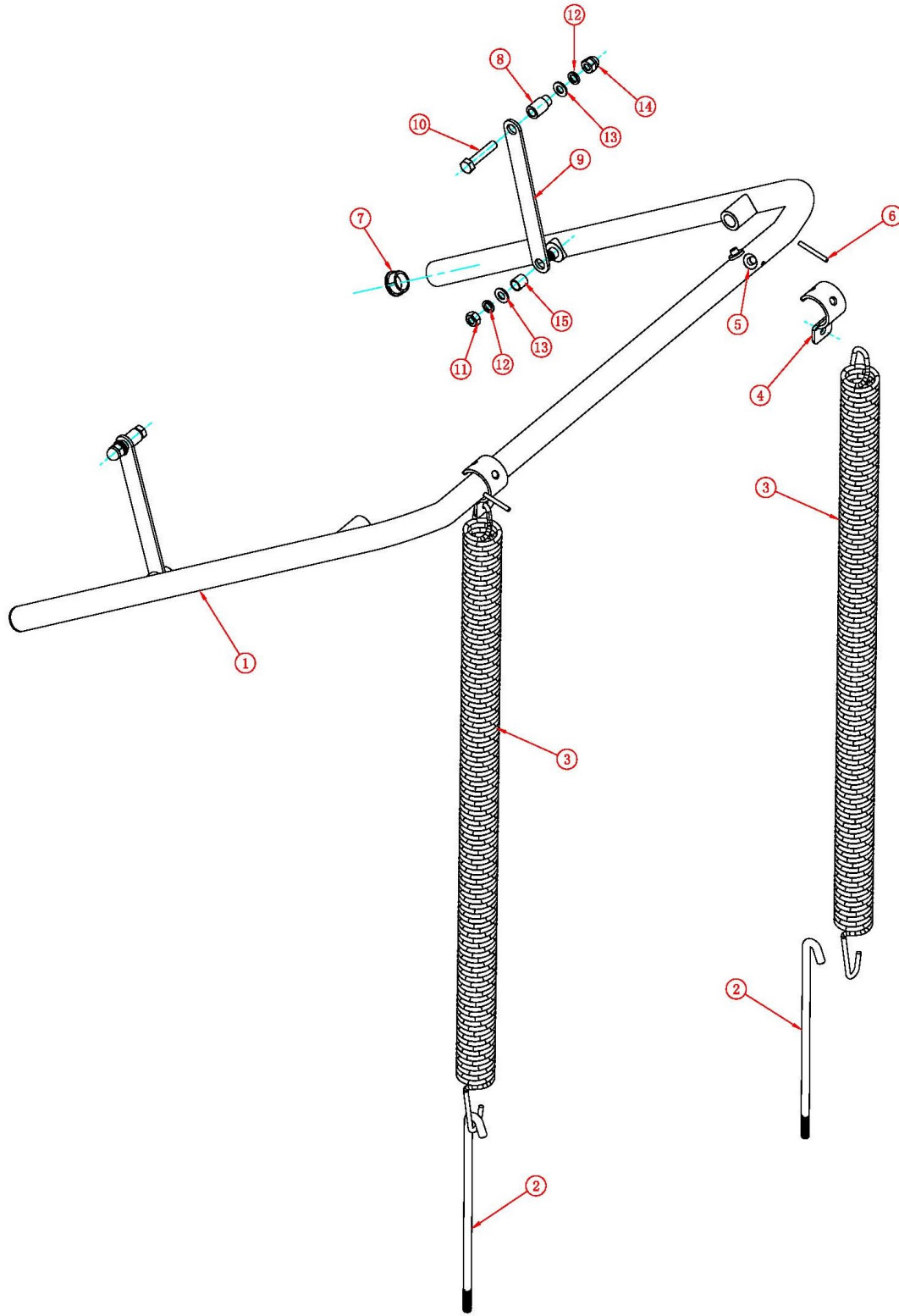


## Wash chamber

<u>Item No.</u>	<u>Parts No.</u>	<u>Part Name</u>	<u>Quantity</u>
1	0JD-20000	Upper Hood	1
2	0JD-65317-1	Clamp	1
3	0JD-65318-1	Clamp	1
4	0JD-25307	Handle Pivot	2
5	F001-25311-01	Sealing Gasket	2
6	E012-M12-01	Washer	2
7	F020-65312-01	Rear Corner Gasket	2
8	F020-65311-01	Front Corner Gasket	2
9	A012-65313-01	Space Tube	6
10	E009-M6x16-01	Bolt M6x16	2
11	E009-M8x20-01	Bolt M8x20	4
12	E009-M8x25-01	Bolt M8x25	6
13	E013-M6-01	Nut M6	2
14	E011-M6-01	Lock Washer M6	2
15	E012-M6-01	Flat Washer M6	2
16	E012-M8-01	Flat Washer M8	10
17	E011-M8-01	Lock Washer M8	8
18	E013-M8-01	Bolt M8	6
19	E014-M8-01	Hex Domed Cap Nut M8	4



Door Type  
Model D1M/EC  
**Chapter (4)**  
**Door Lift**

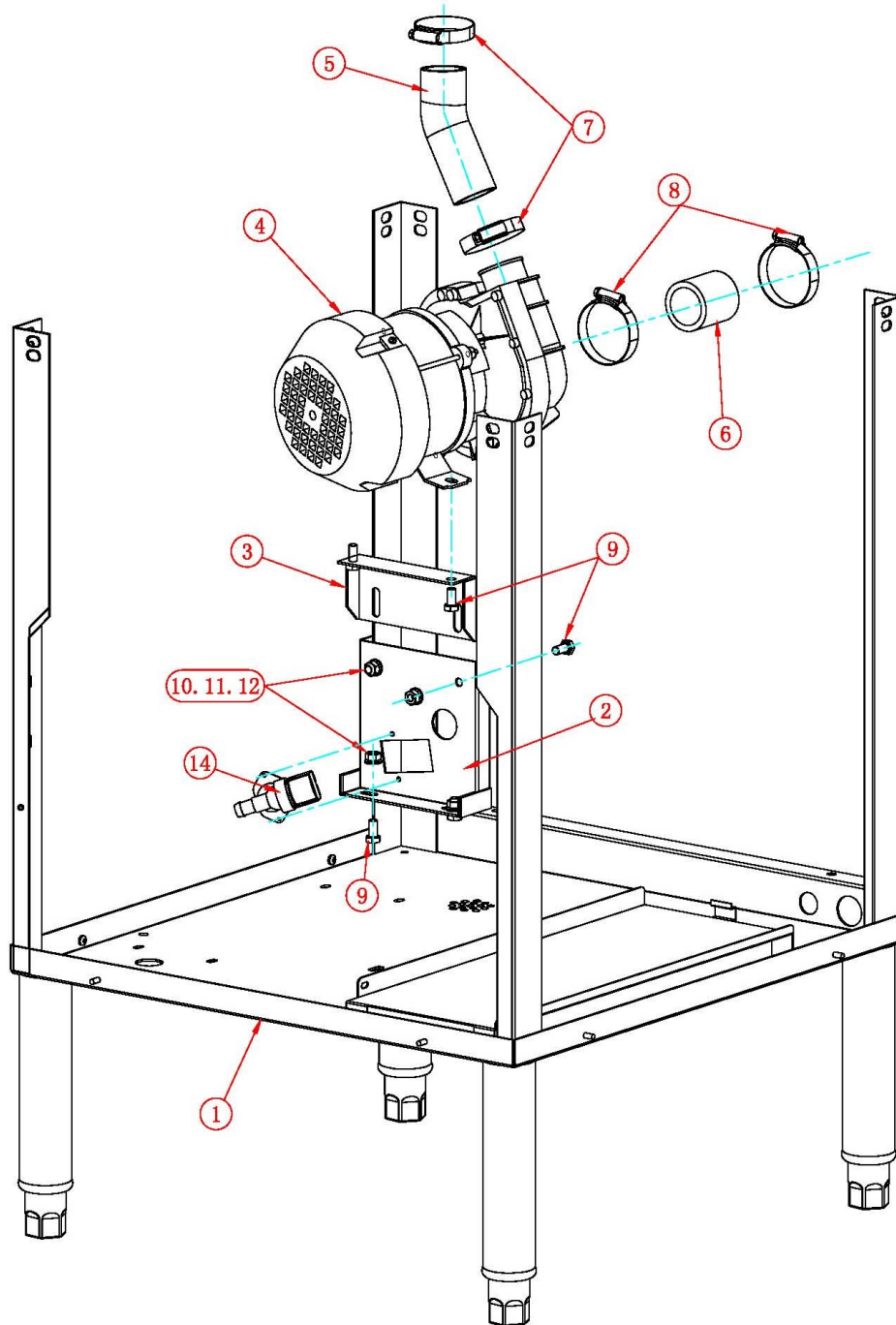


## Door Lift

<u>Item No.</u>	<u>Parts No.</u>	<u>Part Name</u>	<u>Quantity</u>
1	0JD-25301	Handle	1
2	0JD-25303	Hook-Spring	2
3	A002-25309-01	Door Spring	2
4	0JD-25302	Hanger-Spring	2
5	F025-25308-01	Button-Bearing	4
6	0JD-25301-4	Plug	2
7	F005-D25-01	Pipe plug	2
8	A012-25306-01	Pin-Door Lift	2
9	0JD-25304	Link Door	2
10	E009-M8x40-01	Bolt M8x40	6
11	E013-M8-01	Nut M8	2
12	E011-M8-01	Lock Washer M8	4
13	E012-M8-01	Flat Washer M8	4
14	E014-M8-01	Cap Nut M8	2
15	A012-25305-01	Bushing	2

Door Type  
**Chapter (5)**  
Model D1M/EC  
**(Model B)**

**Lower Frame Assembly**



Door Type  
**Chapter (5)**  
 Model D1M/EC  
**(Model B)**

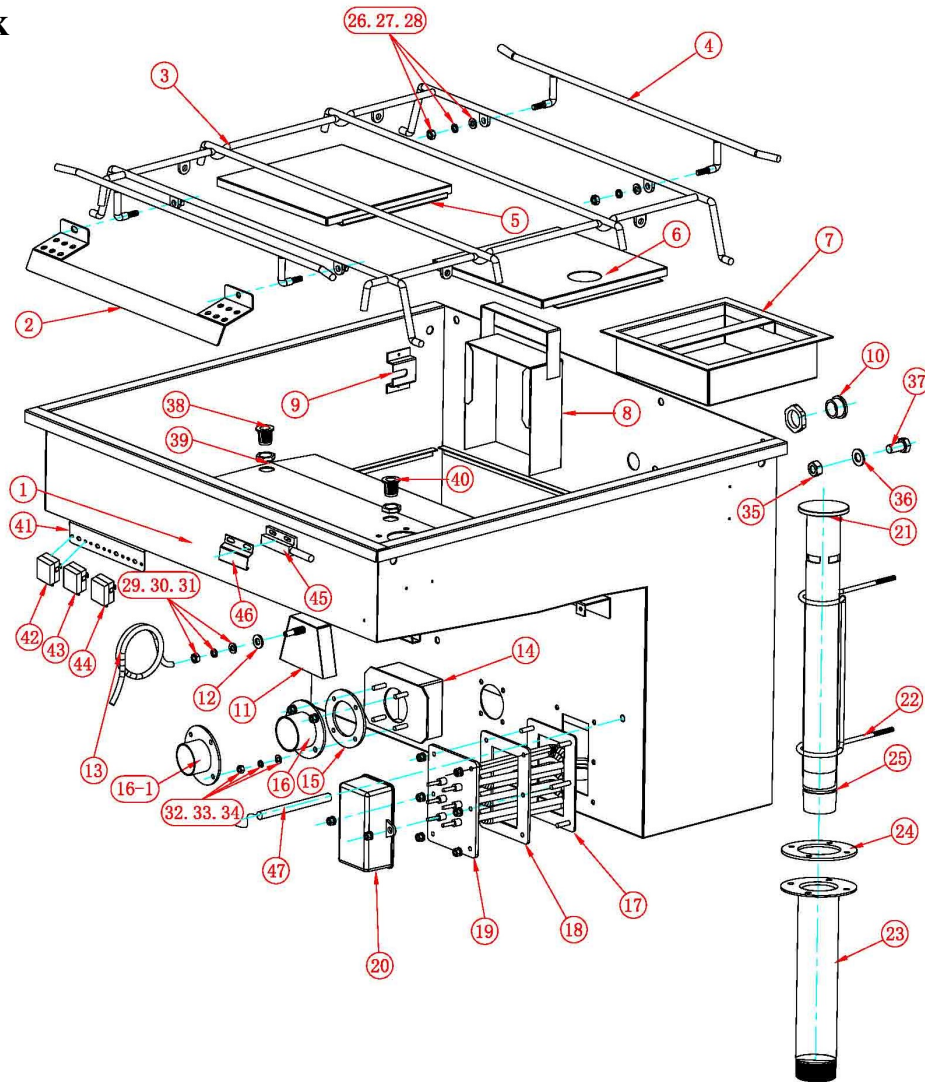
## Lower Frame Assembly

<u>Item No.</u>	<u>Parts No.</u>	<u>Part Name</u>	<u>Quantity</u>
1	OJD-10000B	Base	1
2	OJD-60301	Lower Stand	1
3	OJD-60302A	Upper Stand	1
4	G003-2256T2551-01	Wash Pump (50Hz)	1
4	G003-2256T2561-01	Wash Pump (60Hz)	1
5	F021-50315A-01	Rubber hose	1
6	F021-50316A-01	Rubber hose	1
7	E018-32X57-01	Hose Clamp S.S.	2
8	E018-44X70-01	Hose Clamp S.S.	2
9	E009-M8x20-01	Bolt M8x20	6
10	E013-M8-01	Nut M8	6
11	E011-M8-01	Lock Washer M8	6
12	E012-M8-01	Flat Washer M8	6
13	OJD-10305B-1	Seal plate	1
14	G017-220V-01	Solenoid valve (220v)	1

Door Type  
Dish Washer  
Model D1M/EC

**Chapter (6)**

**Wash Tank**



**Wash Tank**

<u>Item No.</u>	<u>Parts No.</u>	<u>Part Name</u>	<u>Quantit</u>
			<b>Y</b>
1	0JD-10301	Wash Tank	1
2	0JD-30303-1	Anti-Splash	1
3	0JD-30301	Track-Rack	1
4	0JD-30301-5	Side Rail	2
5	0JD-65303-1	Scrape Tray - Left	1
6	0JD-65302-1	Scrape Tray - Right	1

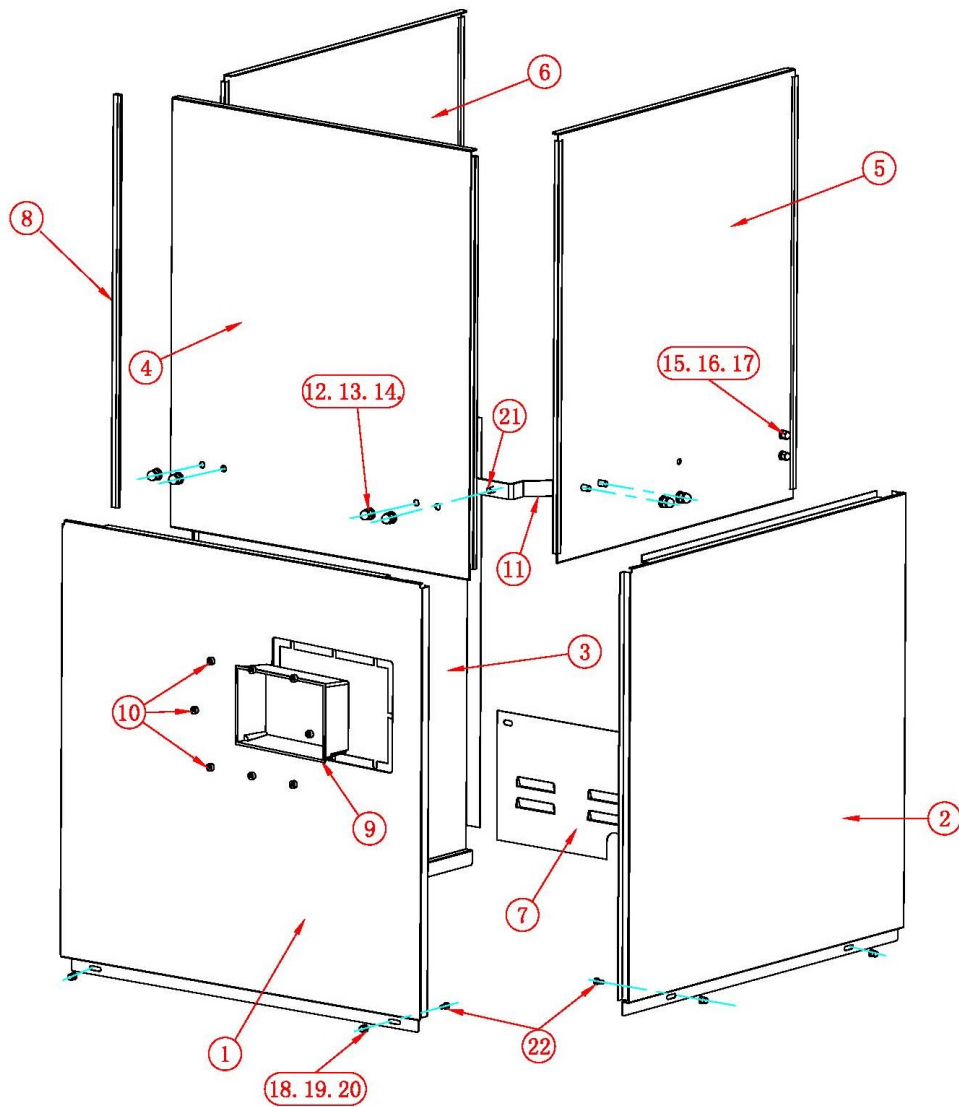
Door Type  
Dish Washer  
Model D1M/EC8

7	0JD-65301	Strainer Basket	1
8	0JD-65304	Pump Intake Screen	1
9	0JD-10301-6	Track Holder	4
10	F005-M22-01	Hole Plug	2
11	0JD-65309	S.S. Air Chamber	1
12	F017-2xD8xD16-01	Gasket	1
13	F022-D8X4-01	Silicon Tube	1
14	0JD-60306A	Pump Intake Screen Holder	1
15	F001-60307A-01	Gasket	1
16	0JD-60305B	Wash Pump Inlet Flange	1
17	0JD-65332	Wash Tank Heater Flange	1
18	F001-40304-01	Gasket	1
19	G005-3KW-01	Heating Element	1
20	F016-40305-01	Heater Cover	1
21	0JD-65305	S.S. Drain/Overflow Pipe	1
22	0JD-65308	Drain Pipe Guider	1
23	0JD-65306A	Drain Pipe Adaptor	1
24	F001-65307A-01	Gasket	1
25	F002-32.5X2.65-01	Drain Pipe O-ring	1
26	E013-M6-01	Nut M6	4
27	E011-M6-01	Lock Washer M6	4
28	E012-M6-01	Flat Washer M6	4
29	E013-M8-01	Nut M8	1
30	E011-M8-01	Lock Washer M8	1
31	E012-M8-01	Flat Washer M8	1
32	E013-M5-01	Nut M5	12
33	E011-M5-01	Lock Washer M5	12
34	E012-M5-01	Flat Washer M5	12
35	E013-M10-01	Nut M10	1
36	E012-M10-01	Flat Washer	1
37	E009-M10x20-01	Hex bolt M10 x 20	1
38	A012-50312A-01	Screw-Sealed (B Type Machine)	1
39	A012-50313-01	Nut	2
40	A012-50312-01	Screw-Sealed	2
41	0JD-10301-8	Support	1
42	G021-110C-01	Booster Overload Thermostat 110°C	1
43	G021-86C-01	Booster Thermostat 86°C	1
44	G021-82C-01	Wash Tank Thermostat 82°C	1
45	0JD-65998A	Door Magnet Switch	1
46	0JD-65340A	Door magnetic bracket	1
47	G065-WZJ1020-03	Wash tank temp. probe (black)	1

Door Type  
Dish Washer  
Model D1M/EC

## Chapter (7)

### Door Panel Assembly



**Door Panel Assembly**

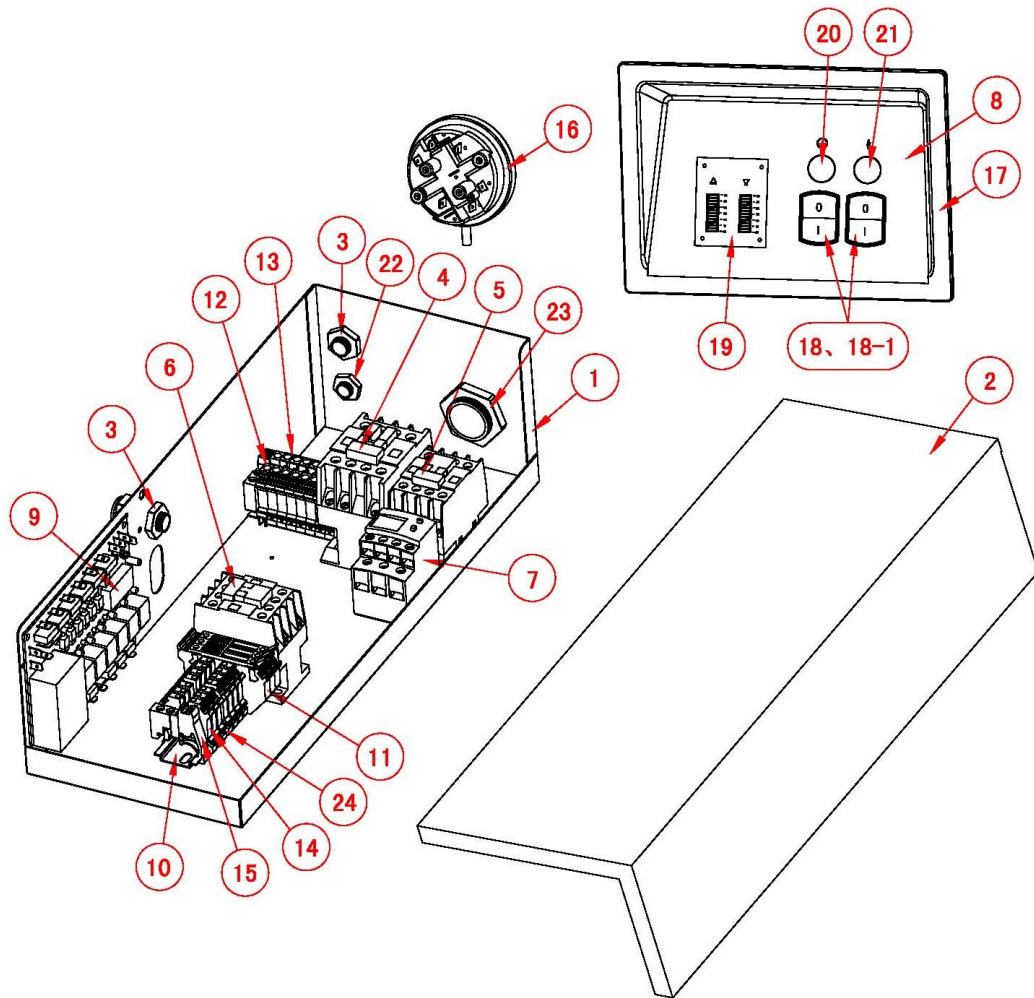
<b><u>Item No.</u></b>	<b><u>Parts No.</u></b>	<b><u>Part Name</u></b>	<b><u>Quantity</u></b>
1	0JD-65A-320	Lower Front Panel	1
2	0JD-65321	Lower Side Panel (R)	1
3	0JD-65322	Lower Side Panel (L)	1
4	0JD-65323	Front Door	1
5	0JD-65324	Side Door (R)	1
6	0JD-65325	Side Door (L)	1
7	0JD-65327	Rear Shrouding	1
8	F003-65326-01	Door Guide	6
9	F046-75301/2A-01	Rear cover	1
10	F046-75301/3A-01	Gasket	8
11	0JD-65316	Bracket-Door	2
12	E014-M8-01	Cap Nut M8	8
13	E011-M8-01	Lock Washer M8	8
14	E012-M8-01	Flat Washer M8	8
15	E014-M6-01	Cap Nut M6	2
16	E011-M6-01	Lock Washer M6	2
17	E012-M6-01	Flat Washer M6	2
18	E013-M5-01	Cap Nut M5	6
19	E011-M5-01	Lock Washer M5	6
20	E012-M5-01	Flat Washer M5	6
21	E009-M5x10-01	Bolt M5x10	6
22	E009-M8x20-01	Bolt M8x16	8



Door Type  
Dish Washer  
Model D1M/EC

## Chapter (8)

### Control Panel



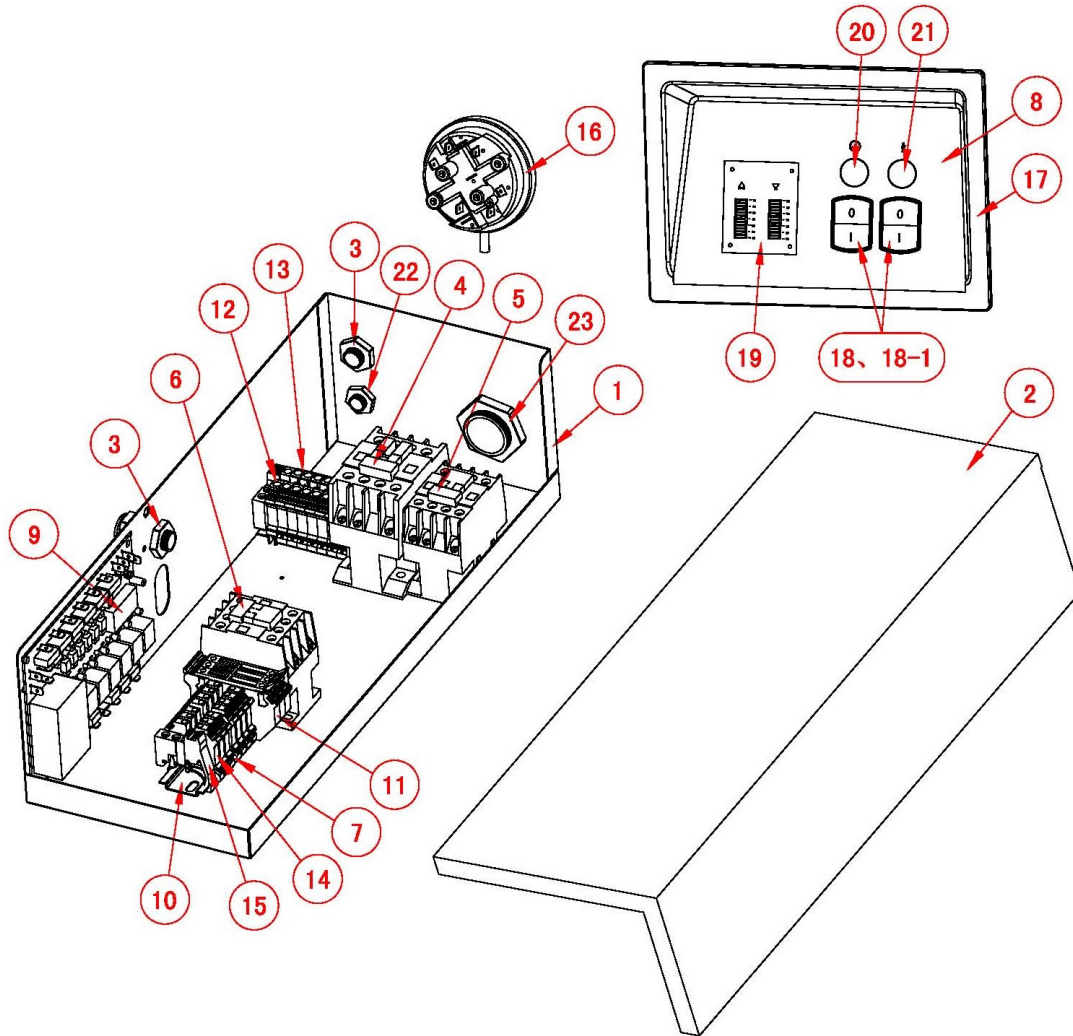
**Chapter (8)****9D41-0008 (HK Model) Control Panel**

<b><u>Item No.</u></b>	<b><u>Parts No.</u></b>	<b><u>Part Name</u></b>	<b><u>Quantity</u></b>
1	0JD-70301	Control Panel Base (S)	1
2	0JD-70302	Control Panel Cover (S)	1
3	G029-PG11-01	Fixed head	2
4	G008-E2501M5N-01	Booster Heater Contactor 32A	1
5	G008-E0610M5N-01	Wash Motor Contactor 9A	1
6	G008-E0901M5N-01	Wash Tank Heater Contactor 6A	1
7	G010-08N-02	Wash Motor Over-Load	1
8	G031-CHAMPION-01	Operation panel	1
9	G013-4006-01	Circuit Board	1
10	G047-DG-01	Guide Rail	0.7
11	G041-4RD-01	Fuse	3
12	G041-6JD-01	Wiring Terminal	1
13	G041-6-01	Wiring Terminal	7
14	G041-4-01	Wiring Terminal	7
15	G042-2G2-01	Track Holder	3
16	G019-B211-313-01	Pressure Switch	1
17	F046-75301/1A-01	The control panel	1
18	G034-KCD4-02	Switch button	2
18-1	G034-KCD4-03	Switch button transparent cover	2
19	G014-1040-01	Temperature Display Panel	1
20	G035-B8s-01	Yellow Lights	1
21	G035-B8s-02	Green Lights	1
22	G029-PG9-01	Conduit	1
23	G029-PG29/2-01	Conduit	1
24	G032-G/DUK-01	Insulator	1

Door Type  
Dish Washer  
Model D1105C

# Chapter (9)

## Control Panel



**9D41-0008 (HK Model) Control Panel FIR**

<b><u>Item No.</u></b>	<b><u>Parts No.</u></b>	<b><u>Part Name</u></b>	<b><u>Quantity</u></b>
1	0JD-70301	Control Panel Base (S)	1
2	0JD-70302	Control Panel Cover (S)	1
3	G029-PG11-01	Fixed head	2
4	G008-E2501M5N-01	Booster Heater Contactor 32A	1
5	G008-E0610M5N-01	Wash Motor Contactor 9A	1
6	G008-E0901M5N-01	Wash Tank Heater Contactor 6A	1
7	G032-G/DUK-01	The protective plate	1
8	G031-CHAMPION-01	Operation panel	1
9	G013-4006-01	Circuit board	1
10	G047-DG-01	Guide Rail	0.7
11	G041-4RD-01	Fuse	3
12	G041-6JD-01	Wiring Terminal	1
13	G041-6-01	Wiring Terminal	7
14	G041-4-01	Wiring Terminal	7
15	G042-2G2-01	Track Holder	3
16	G019-B211-313-01	Pressure Switch	1
17	F046-75301/1A-01	Control panel	1
18	G034-KCD4-02	On/Off Switch	2
18-1	G034-KCD4-03	Switch button transparent cover	2
19	G014-1040-01	Temperature Display Board	1
20	G035-B8s-01	Yellow Lights	1
21	G035-B8s-02	Green Lights	1
22	G029-PG9-01	Conduit	1
23	G029-PG29/2-01	Conduit	1